



WE ARE POWER OF SUNREX

**BRITISH STANDARD SEMICONDUCTOR FUSES**

DIAGRAM	SUNREX POWER CAT.NO.	AMPS	VOLTS	EQUIVALENT EE-USA CAT NO.
	CT-05ET-GSB	5	690V	CT-5/690
	CT-10ET-GSB	10		CT-10/690
	CT-12ET-GSB	12		CT-12/690
	CT-16ET-GSB	16		CT-16/690
	CT-20ET-GSB	20		CT-20/690

DIAGRAM	SUNREX POWER CAT.NO.	AMPS	VOLTS	EQUIVALENT FERRAZ CAT NO.
	SZ000UB69200	200	690V	FZ000UB69200
	SZ000UB69250	250		FZ000UB69250
	SZ000UB69315	315		FZ000UB69315
	SZ000UB69400	400		-----

DIAGRAM	SUNREX POWER CAT.NO.	AMPS	VOLTS	EQUIVALENT BUSSMANN CAT NO.
	SWX-45	45	690V	FWX-45
	SWX-100	100		FWX-100
	SWX-200	200		FWX-200
	SWX-300	300		FWX-300

ALL DIMENSIONS IN MM



Distributor in India

**SAHIL ELECTRONICS**

208, 2nd. FLOOR, R-22,  
KHANEJA COMPLEX, VIKAS MARG, SHAKARPUR  
NEW DELHI- 110092 (INDIA)

Tel : (011)-22443951 | E-mail: sahil2001@yahoo.com  
 (011)-22450669 | (011)-22464894 | Mobile :  
 Fax: (011)-22528193 | (0)- 9899153952

Hotline: (011)-22059465, 22059466  
 Visit us: www.sahilelectronics.com



SEMICONDUCTOR  
FUSES  
FOR  
PROTECTION  
OF  
POWER SEMICONDUCTORS



PRODUCT CATALOGUE



### SEMICONDUCTOR PROTECTION FUSES

#### 'D' TYPE (BOTTLE TYPE)

DIAGRAM	SUNREX POWER CAT.NO.	AMPS	VOLTS	DIN SIZE	DIA 'D'	EQUIVALENT	
						SIBA CAT NO.	SIEMENS CAT NO.
	S02D1500	2	500V	D-I	12.5 mm	10002.07	5SB211
	S04D1500	4				10002.07	5SB221
	S06D1500	6				10002.07	5SB231
	S10D1500	10				10002.07	5SB251
	S16D1500	16				10002.07	5SB261
	S20D1500	20				10002.07	5SB271
	S25D1500	25				10002.07	5SB281

#### 'D' TYPE (BOTTLE TYPE)

DIAGRAM	SUNREX POWER CAT.NO.	AMPS	VOLTS	DIN SIZE	DIA 'D'	EQUIVALENT	
						SIBA CAT NO.	SIEMENS CAT NO.
	S02D2500	2	500V	D-II	22 mm	10005.07	5SB111
	S04D2500	4				10005.07	5SB121
	S06D2500	6				10005.07	5SB131
	S10D2500	10				10005.07	5SB141
	S16D2500	16				10005.07	5SB161
	S20D2500	20				10005.07	5SB171
	S25D2500	25				10005.07	5SB181
	S30D2500	30				10005.07	-----

#### 'D' TYPE (BOTTLE TYPE)

DIAGRAM	SUNREX POWER CAT.NO.	AMPS	VOLTS	DIN SIZE	DIA 'D'	EQUIVALENT	
						SIBA CAT NO.	SIEMENS CAT NO.
	S35D3500	35	500V	D-III	27 mm	10007.07	5SB311
	S40D3500	40				10007.07	-----
	S50D3500	50				10007.07	5SB321
	S63D3500	63				10007.07	5SB331

#### 'D' TYPE (BOTTLE TYPE)

DIAGRAM	SUNREX POWER CAT.NO.	AMPS	VOLTS	DIN SIZE	DIA 'D'	EQUIVALENT	
						SIBA CAT NO.	SIEMENS CAT NO.
	S80D4500	80	500V	D-IV	33 mm	10009.07	5SC111
	S100D4500	100				10009.07	5SC121
	S160D4500	160				10009.07	-----

2 to 6 AMPS FUSES OF D-1 SIZE IS AVAILABLE WITHOUT TRIP INDICATOR  
 DETAIL DATASHEET CAN BE AVAILABLE ON REQUEST  
 100% EQV. TO SIEMENS, SIBA, JEANMULLER, FERRAZ, EFEN, BUSSMANN

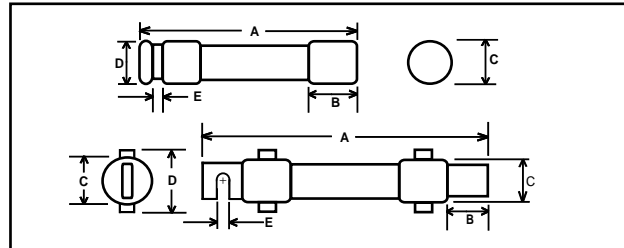


### DUAL ELEMENT-TIME DELAY FUSES



#### CLASS: RK-5

SUNREX POWER CAT.NO.	AMPS	VOLTS	EQUIVALENT		DIAGRAM
			LITTLE FUSE P/NO.	BUSSMAN P/NO.	
SLSR-0.1	1/10	600V AC/DC	FLSR-0.1	FRSR-0.1	
SLSR-1	1		FLSR-1	FRSR-1	
SLSR-10	10		FLSR-10	FRSR-10	
SLSR-20	20		FLSR-20	FRSR-20	
SLSR-40	40		FLSR-40	FRSR-40	
SLSR-60	60		FLSR-60	FRSR-60	
SLSR-80	80		FLSR-80	FRSR-80	
SLSR-100	100		FLSR-100	FRSR-100	
SLSR-125	125		FLSR-125	FRSR-125	
SLSR-150	150		FLSR-150	FRSR-150	
SLSR-200	200		FLSR-200	FRSR-200	
SLSR-250	250		FLSR-250	FRSR-250	
SLSR-300	300		FLSR-300	FRSR-300	
SLSR-350	350		FLSR-350	FRSR-350	
SLSR-400	400		FLSR-400	FRSR-400	
SLSR-450	450		FLSR-450	FRSR-450	
SLSR-500	500	FLSR-500	FRSR-500		
SLSR-600	600	FLSR-600	FRSR-600		



AMP.	FIG. NO.	SERIES	DIMENSIONS IN MM				
			A	B	C	D	E
1/10-30	1	SLSR	127.0	15.9	20.6	15.9	-----
35-60	1	SLSR	139.7	15.9	27.0	22.2	-----
70-100	2	SLSR	200.0	27.0	33.3	38.1	7.1
110-200	2	SLSR	244.5	37.3	46.8	53.2	7.1
225-400	2	SLSR	295.3	50.8	65.9	72.2	10.3
450-600	2	SLSR	339.7	61.1	78.6	84.9	13.5

INTERRUPTING RATING OF FUSES IS AC: 3,00,000 & DC: 20,000 AMPERERS  
 CAN BE USE IN MOTORS, TRANSFORMERS & ALL GENERAL CIRCUITS  
 100% EQV. TO LITTLEFUSE, LIMITRON, FERRAZ, BUSS, FUSETRON



### SEMICONDUCTOR PROTECTION FUSES

#### CYLINDRICAL ( FERRULE ) TYPE

DIAGRAM	SUNREX POWER PART NO.	AMPS	VOLTS	EQUIVALENT	
				FERRAZ CAT NO.	SIBA CAT NO

#### SIZE : 10 x 38 mm ( A=38, B=10 )

	S1038006	6	660V / 690V	E330008	5017906
	S1038008	8		F330009	5017906
	S1038010	10		G330010	5017906
	S1038012	12		H330011	5017906
	S1038016	16		J330012	5017906
	S1038020	20		K330013	5017906
	S1038025	25		L330014	5017906
	S1038030	30		M330015	5017906

#### SIZE : 14 x 51 mm ( A=51, B=14 )

	S1451006	6	660V / 690V	G081518	5012634
	S1451008	8		C093911	5012634
	S1451010	10		D093912	5012634
	S1451012	12		E093913	5012634
	S1451016	16		F093914	5012634
	S1451020	20		G093915	5012634
	S1451025	25		H093916	5012634
	S1451030	30		J093917	5012634
	S1451040	40		T100136	5012634
	S1451050	50		V100137	5012634

#### SIZE : 22 x 58 mm ( A=58, B=22 )

	S2258050	50	660V / 690V	D093958	5014206
	S2258063	63		K093803	5014206
	S2258080	80		E093959	5014206
	S2258100	100		F093960	5014206
	S2258125	125		-----	5014206
	S2258160	160		-----	5014206

#### SIZE : 27 x 60 mm ( A=60, B=27 )

	S2760050	50	660V / 690V	R076306	5019720
	S2760080	80		S079964	5019720
	S2760100	100		T099400	5019720
	S2760160	160		S076307	5019720

DATASHEET AVAILABLE ON REQUEST

ALL ABOVE FUSES ALSO AVAILABLE WITHOUT TRIP INDICATOR  
DETAIL DATASHEET CAN BE AVAILABLE ON REQUEST  
100% EQV. TO BUSSMANN, SIBA, FERRAZ, HINODE, EFEN, SHAWMUT



### SEMICONDUCTOR PROTECTION FUSES

#### NH TYPE ( EQV. TO SIEMENS SITOR )

SUNREX POWER CAT.NO.	AMPS	VOLTS	EQUIVALENT		DIAGRAM
			SIBA CAT NO.	SIEMENS CAT NO.	
S2800250	250	800V	2016904	3NE4327-0B	
S2800330	330		2016904	3NE4330-0B	
S2800450	450		2016904	3NE4333-0B	
S2800500	500		2016904	3NE4334-0B	
S2800710	710		2016904	3NE4337-0B	

#### NH TYPE ( EQV. TO SIEMENS SITOR )

SUNREX POWER CAT.NO.	AMPS	VOLTS	EQUIVALENT		DIAGRAM
			SIBA CAT NO.	SIEMENS CAT NO.	
G2800250	250	800V	2033520	3NE4327-6B	
G2800330	330		2033520	3NE4330-6B	
G2800450	450		2033520	3NE4333-6B	
G2800500	500		2033520	3NE4334-6B	
G2800710	710		2033520	3NE4337-6B	

#### NH TYPE ( EQV. TO SIEMENS SITOR )

SUNREX POWER CAT.NO.	AMPS	VOLTS	EQUIVALENT		DIAGRAM
			SIBA CAT NO.	SIEMENS CAT NO.	
S3250690	250	690V	2037304	3NC2427	
S3300690	300		2037304	3NC2428	
S3350690	350		2037304	3NC2431	
S3400690	400		2037304	3NC2432	

ALL ABOVE FUSES IS AVAILABLE WITH MICRO SWITCH ATTACHMENT  
DETAIL DATASHEET CAN BE AVAILABLE ON REQUEST  
100% EQV. TO SIEMENS SITOR, SIBA, LINDNER, HINODE, JEAN MULLER



### SPECIAL MIDGET FUSES

#### CLASS CC : FAST ACTING

DIAGRAM	SUNREX POWER CAT.NO.	AMPS	VOLTS	EQUIVALENT	
				LITTLE FUSE CAT NO.	BUSS-UK CAT NO.
	SLKR01	1	250 VAC	KLKR001	KTKR001
	SLKR1.5	1.5		KLKR01.5	KTKR01.5
	SLKR02	2		KLKR002	KTKR002
	SLKR2.5	2.5		KLKR02.5	KTKR02.5
	SLKR04	4		KLKR004	KTKR004
	SLKR05	5		KLKR005	KTKR005
	SLKR15	15		KLKR015	KTKR015
	SLKR20	20		KLKR020	KTKR020
	SLKR25	25		KLKR025	KTKR025
	SLKR30	30		KLKR030	KTKR030

#### CLASS CC : TIME DELAY

DIAGRAM	SUNREX POWER CAT.NO.	AMPS	VOLTS	EQUIVALENT					
				LITTLE FUSE CAT NO.	BUSS-UK CAT NO.				
					SCMR01	1	250 VAC	ECMR001	KLMR001
					SCMR1.5	1.5		ECMR01.5	KLMR01.5
					SCMR02	2		ECMR002	KLMR002
					SCMR2.5	2.5		ECMR02.5	KLMR02.5
					SCMR04	4		ECMR004	KLMR004
					SCMR05	5		ECMR005	KLMR005
					SCMR15	15		ECMR015	KLMR015
					SCMR20	20		ECMR020	KLMR020
SCMR25	25	ECMR025	KLMR025						
SCMR30	30	ECMR030	KLMR030						

#### CLASS CC : MIDGET DELAY

DIAGRAM	SUNREX POWER CAT.NO.	AMPS	VOLTS	EQUIVALENT					
				LITTLE FUSE CAT NO.	BUSS-UK CAT NO.				
					SLDR01	1	250 VAC	KLDR001	FNQR001
					SLDR1.5	1.5		KLDR01.5	FNQR01.5
					SLDR02	2		KLDR002	FNQR002
					SLDR2.5	2.5		KLDR02.5	FNQR02.5
					SLDR04	4		KLDR004	FNQR004
					SLDR05	5		KLDR005	FNQR005
					SLDR15	15		KLDR015	FNQR015
					SLDR20	20		KLDR020	FNQR020
SLDR25	25	KLDR025	FNQR025						
SLDR30	30	KLDR030	FNQR030						

SLKR FUSES PROVIDE FAST ACTING PROTECTION TO EQUIPMENTS CONTAINING SURGE SENSITIVE COMPONENTS.  
SCMR FUSES PROVIDE SHORT CIRCUIT PROTECTION TO MOTOR CIRCUITS



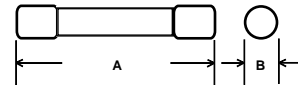
### SEMICONDUCTOR PROTECTION FUSES

#### GLASS BODY SIZE : SIZE : 5 x 20 mm ( A=20, B=5 )

SUNREX POWER CAT.NO.	AMPS	VOLTS	EQUIVALENT		DIAGRAM
			FERRAZ CAT NO.	SIBA CAT NO.	
G5X20250	.250	250 VAC	D090508	7000140	
G5X20500	.500		H090512	7000140	
G5X20750	.750		K090514	7000140	
G5X20001	1		L090515	7000140	
G5X20106	1.6		N090517	7000140	
G5X20002	2		P090518	7000140	
G5X20003	3		-----	7000140	
G5X20315	3.15		R090520	7000140	
G5X20005	5		T090522	7000140	
G5X20006	6		-----	7000140	
G5X20603	6.3		V090523	7000140	
G5X20008	8		W090524	7000140	
G5X20010	10		X090525	7000140	

#### GLASS BODY SIZE : 6 x 32 mm ( A=32, B=6 )

SUNREX POWER CAT.NO.	AMPS	VOLTS	EQUIVALENT		DIAGRAM
			FERRAZ CAT NO.	BUSSMANN CAT NO.	
G6X32250	.250	250 VAC	-----	AGC-250-R	
G6X32500	.500		R090566	AGC-500-R	
G6X32001	1		V090570	AGC-001-R	
G6X32106	1.6		X090571	AGC-106-R	
G6X32002	2		Y090572	AGC-002-R	
G6X32205	2.5		Z090573	AGC-205-R	
G6X32003	3		-----	AGC-003-R	
G6X32315	3.15		A090574	AGC-315-R	
G6X32004	4		B084575	AGC-004-R	
G6X32603	6.3		D090577	AGC-603-R	
G6X32008	8		E090578	AGC-008-R	
G6X32010	10		F090579	AGC-010-R	



ALL FUSES IS AVAILABLE WITHOUT TRIP INDICATOR  
ABOVE FUSES ALSO AVAILABLE IN 500 V RATING WITH GLASS BODY  
100% EQV. TO SIBA, FERRAZ, HINODE, LITTLEFUSE, EFEN, BUSSMANN



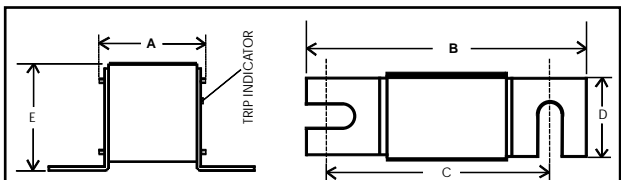
**ULTRA Rapid**  
SEMICONDUCTOR PROTECTION FUSES

**BOLTED CONTACT TYPE**

DIAGRAM	SUNREX POWER CAT.NO.	AMPS	VOLTS	EQUIVALENT	
				SIBA CAT NO.	SIEMENS CAT NO.
	S000C010	10	690V	2028220	-----
	S000C016	16		2016904	-----
	S000C020	20		2016904	3NE8714
	S000C025	25		2016904	3NE8715
	S000C032	32		2016904	3NE8701
	S000C035	35		2016904	-----
	S000C040	40		2016904	3NE8702
	S000C050	50		2016904	3NE8717
	S000C063	63		2016904	3NE8718
	S000C080	80		2016904	3NE8720
	S000C100	100		2016904	3NE8721
	S000C125	125		2016904	3NE8722
	S000C160	160		2016904	3NE8724
	S000C200	200		2016904	3NE8725
	S000C250	250		2016904	3NE8727
	S000C315	315		2016904	3NE8731
	S000C350	350		2016904	-----
	S000C400	400		2016904	-----

**BOLTED CONTACT TYPE**

DIAGRAM	SUNREX POWER CAT.NO.	AMPS	VOLTS	EQUIVALENT	
				SIBA CAT NO.	SIEMENS CAT NO.
	S00UF160	160	690V	2016704	3NE8724
	S00UF315	315		2016704	3NE8731
	S00UF350	350		2016704	3NE8734



SIZE	HOLE TO HOLE	A	B	C	D	E
00	80	54	105	80	25	47
000C	80	54	105	80	20	47

ALL ABOVE FUSES ARE AVAILABLE WITHOUT 'T' BRACKET  
 DETAIL DATASHEET CAN BE AVAILABLE ON REQUEST  
 100% EQV. TO BUSSMANN, SIBA, FERRAZ, LINDNER, SIEMENS SITOR, EFEN

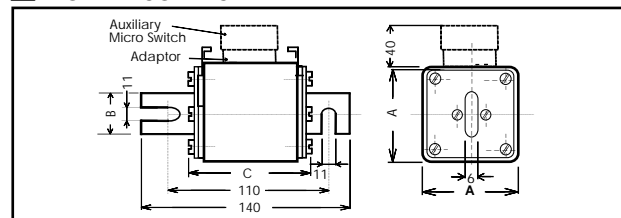


**ULTRA Rapid**  
SEMICONDUCTOR PROTECTION FUSES

**SQUARE BODY TYPE**

SUNREX POWER CAT.NO.	AMPS	VOLTS	EQUIVALENT		DIAGRAM
			SIBA CAT NO.	JEAN MULLER CAT NO.	
S1110080	80	690V	2045822	R1024122	 1 SIZE: 51 x 51 MM
S1110100	100		2045822	R1024322	
S1110125	125		2045822	R1024622	
S1110160	160		2045822	R1024922	
S1110200	200		2045822	R1025222	
S1110250	250		2045822	R1025622	
S1110315	315		2045822	R1025922	
S1110350	350		2045822	R1026022	
S1110400	400		2045822	R1026222	
S1110450	450		2045822	R1026422	
S1110500	500		2045822	R1026622	
S1110630	630		2045822	R1026922	
S2110400	400	690V	2045022	R2026222	 2 SIZE: 60 x 60 MM
S2110450	450		2045022	R2026422	
S2110500	500		2045022	R2026622	
S2110630	630		2045022	R2027022	
S2110710	710		2045022	R2027222	
S3110630	630		2046022	R3026922	
S3110710	710	690V	2046022	R3027022	 3 SIZE: 75 x 75 MM
S3110800	800		2046022	R3027222	
S3111000	1000		2046022	R3027622	
S3111250	1250		2046022	R3027922	

**BOLTED CONTACT TYPE**



SIZE	HOLE TO HOLE	VOLTS	A	B	C
1	110	690	51	24	52
2	110	690	60	30	52
3	110	690	75	37	52

HOLE TO HOLE : 80 MM ALSO ABOVE IN 1000/ 1500/ 2000/ 2500V RATING  
 ADAPTOR & MICRO SWITCH AVAILABLE ON REQUEST  
 100% EQV. TO SIEMENS SITOR, SIBA, FERRAZ, BUSSMANN, MITSUBISHI



SEMICONDUCTOR PROTECTION FUSES

NH TYPE ( EQV. TO SIEMENS SITOR )

DIAGRAM	SUNREX POWER CAT.NO.	AMPS	VOLTS	EQUIVALENT			
				SIBA CAT NO.	SIEMENS CAT NO.		
	M0001069	10	690V	2020920	-----		
	M0001669	16		2020920	3NE1813		
	M0002069	20		2020920	3NE1814		
	M0002569	25		2020920	3NE8015		
	M0003269	32		2020920	-----		
	M0003569	35		2020920	3NE8016		
	M0004069	40		2020920	-----		
	M0005069	50		2020920	3NE8017		
	M0006369	63		2020920	3NE8018		
	M0008069	80		2020920	3NE8020		
	M0010069	100		2020920	3NE8021		
	M0012569	125		2020920	3NE8022		
	M0016069	160		2020920	3NE8024		

NH TYPE ( EQV. TO SIEMENS SITOR )

DIAGRAM	SUNREX POWER CAT.NO.	AMPS	VOLTS	EQUIVALENT	
				SIBA CAT NO.	SIEMENS CAT NO.
	M0321000	32	1000V	2038404	3NE4101
	M0401000	40		2038404	3NE4102
	M0501000	50		2038404	3NE4117
	M0631000	63		2038404	3NE4118
	M0801000	80		2038404	3NE4120
	M1001000	100		2038404	3NE4121
	M1251000	125		2038404	3NE4122
	M1601000	160		2038404	3NE4124

ABOVE FUSES ALSO AVAILABLE IN 500/ 660 V RATING  
DETAIL DATASHEET CAN BE AVAILABLE ON REQUEST  
ALL FUSES ARE 100% EQV. TO SIEMENS SITOR, SIBA, FERRAZ, BUSSMANN



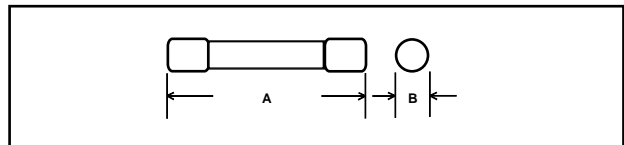
SEMICONDUCTOR PROTECTION FUSES

CERAMIC BODY SIZE : 5 x 20 mm ( A=20, B=5 )

SUNREX POWER CAT.NO.	AMPS	VOLTS	EQUIVALENT		DIAGRAM		
			LITTLE FUSE CAT NO.	WICKMANN P/NO.			
S5X20250	.250	500 V AC	-----	0800.250			
S5X20500	.500		-----	0800.500			
S5X20750	.750		-----	0800.750			
S5X20001	1		F2986-ND	0800.001			
S5X20106	1.6		-----	0800.106			
S5X20002	2		F2987-ND	0800.002			
S5X20003	3		-----	0800.003			
S5X20315	3.15		F2988-ND	0800.315			
S5X20005	5		F2990-ND	0800.005			
S5X20603	6.3		F2991-ND	0800.603			
S5X20008	8		F2992-ND	0800.008			
S5X20010	10		F2993-ND	0800.010			
S5X20015	15		-----	0800.015			

CERAMIC BODY SIZE : 6 x 32 mm ( A=32, B=6 )

SUNREX POWER CAT.NO.	AMPS	VOLTS	EQUIVALENT		DIAGRAM		
			SIBA P/NO.	BUSS P/NO.			
S6X32250	.250	500 V AC	189020025	FWH-250A6F			
S6X32500	.500		189020005	FWH-500A6F			
S6X32001	1		1890201	FWH-001A6F			
S6X32002	2		1890202	FWH-002A6F			
S6X32315	3.15		189020315	FWH-315A6F			
S6X32005	5		1890205	FWH-005A6F			
S6X32603	6.3		18902063	FWH-603A6F			
S6X32010	10		18902010	FWH-010A6F			
S6X32015	15		18902015	FWH-015A6F			
S6X32020	20		18902020	FWH-020A6F			
S6X32025	25		18902025	FWH-025A6F			
S6X32030	30		18902030	FWH-030A6F			



ALL FUSES IS AVAILABLE WITHOUT TRIP INDICATOR  
FUSES ALSO AVAILABLE IN 250 V RATING WITH GLASS BODY  
100% EQV. TO SIBA, FERRAZ, WICKMANN, LITTLEFUSE, EFEN, BUSSMANN